

160± Acres CRP Rush County, Kansas

Price Reduced: \$196,000.00 Cash

2011 Property Tax \$371.50

No improvements.

Water rights of record or appurtenant to the property shall be included in sale.

Minerals: Seller shall retain.

Seller has received a burn order from the FSA and Seller will burn at Seller's expense.

<u>CRP:</u>	<u>Contract</u>	<u>Acres</u>	<u>\$ Per Acre</u>	<u>Annual Pymt</u>	<u>Contract Period</u>
	1555	144.4	\$40.19	\$5,803.00	10/01/05 – 09/30/20

Possession immediate upon closing.

From Nekoma, 1 mile east and 1.5 miles south.

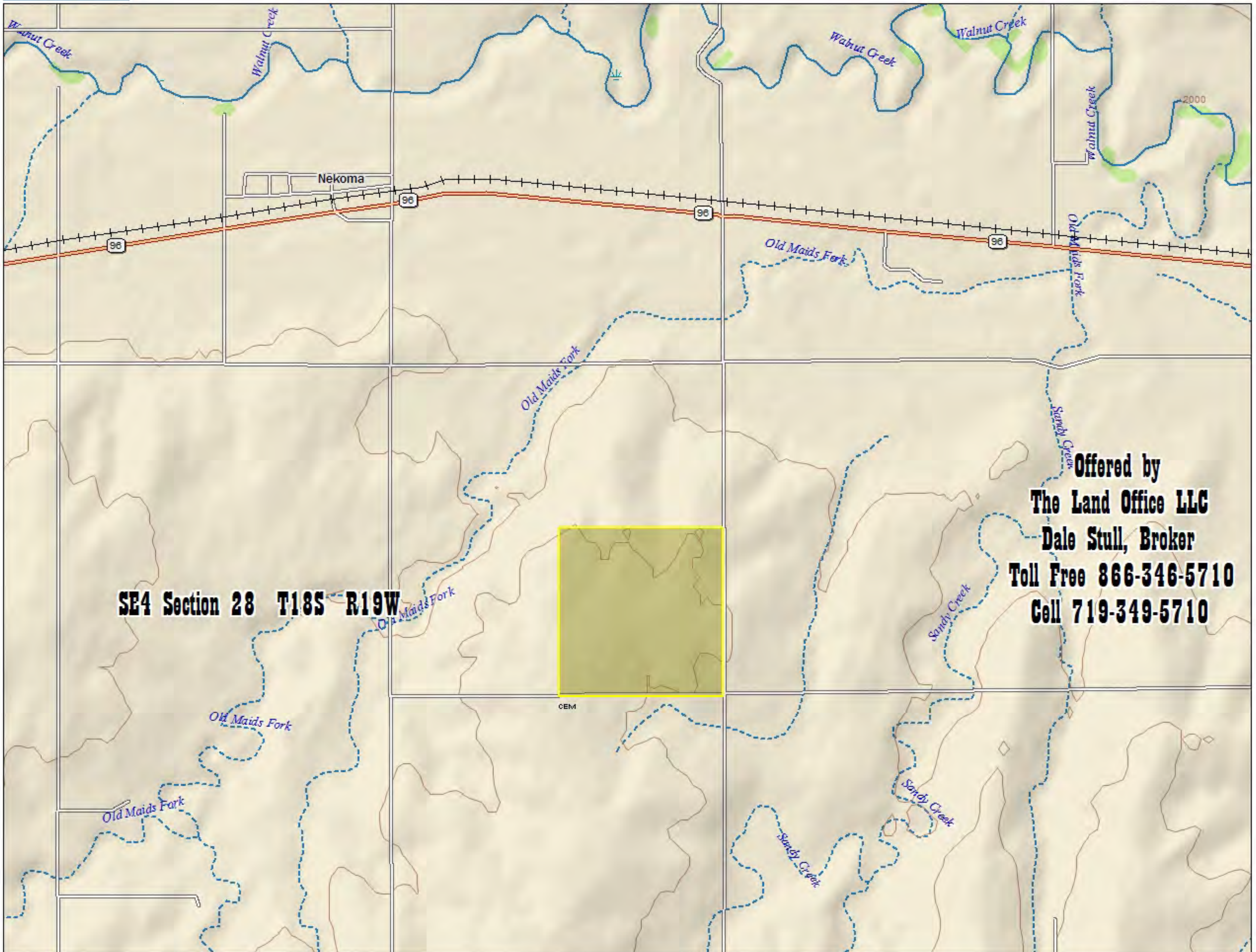
Legal: SE4 Section 28, Township 18 South, Range 19 West of the 6th P.M.
Rush County, KS

1148

Information contained herein, while not guaranteed, is from sources we believe reliable. The value from this investment is for the reader, his or her tax advisor, legal counsel, and/or other advisors to evaluate and is not to be based solely on the information provided herein. The prospect should carefully verify each item of information contained herein. Price, terms, and information subject to change.

Dale Stull, Broker
19483 County Road 40 • Bethune, CO 80805
719-346-5710 • Cell: 719-349-5710 • Fax 719-346-5013 • Toll Free 866-346-5710
Email: dalestull@thelandofficellc.com <http://www.thelandofficellc.com>



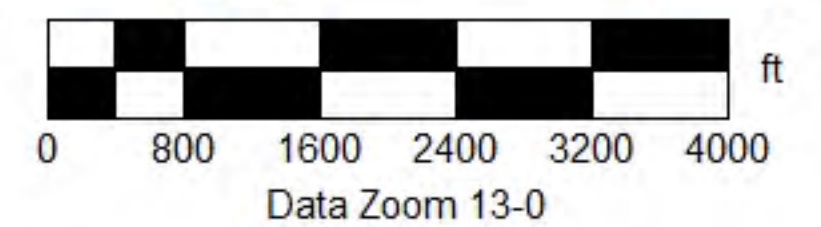


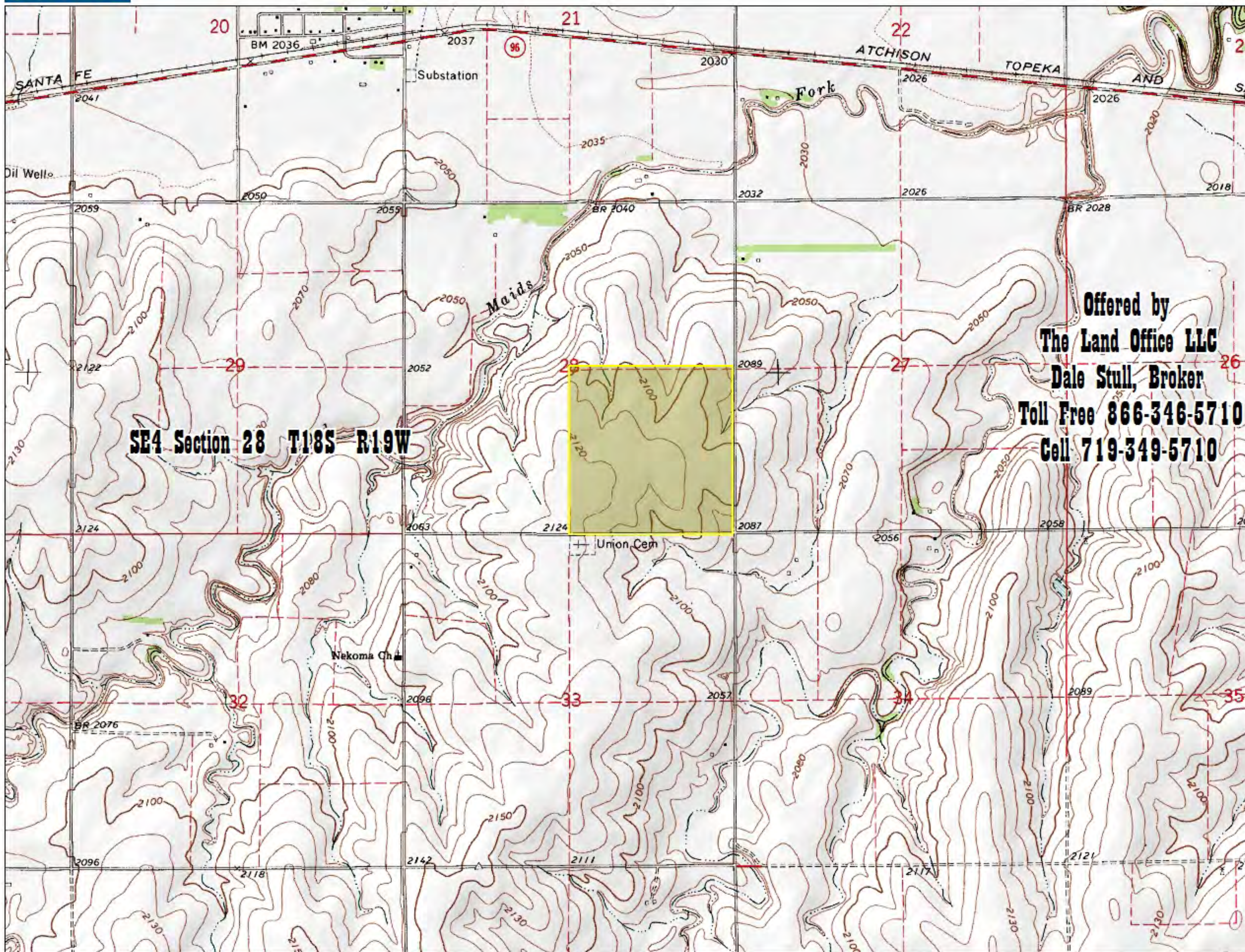
Offered by
The Land Office LLC
Dale Stull, Broker
Toll Free 866-346-5710
Cell 719-349-5710

Data use subject to license.

© DeLorme. XMap® 5.2 Professional.

www.delorme.com



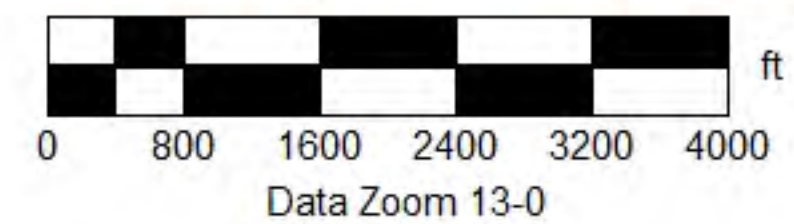


Offered by
The Land Office LLC
 Dale Stull, Broker
 Toll Free 866-346-5710
 Cell 719-349-5710

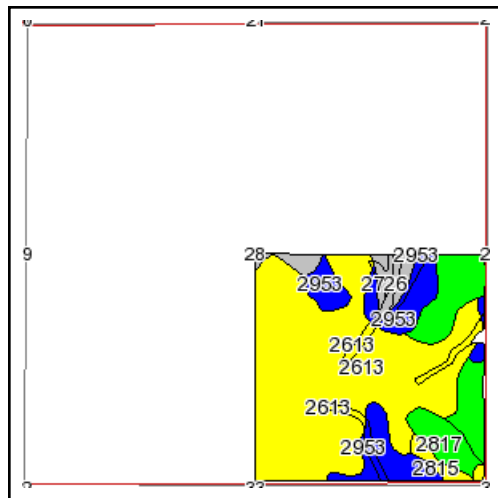
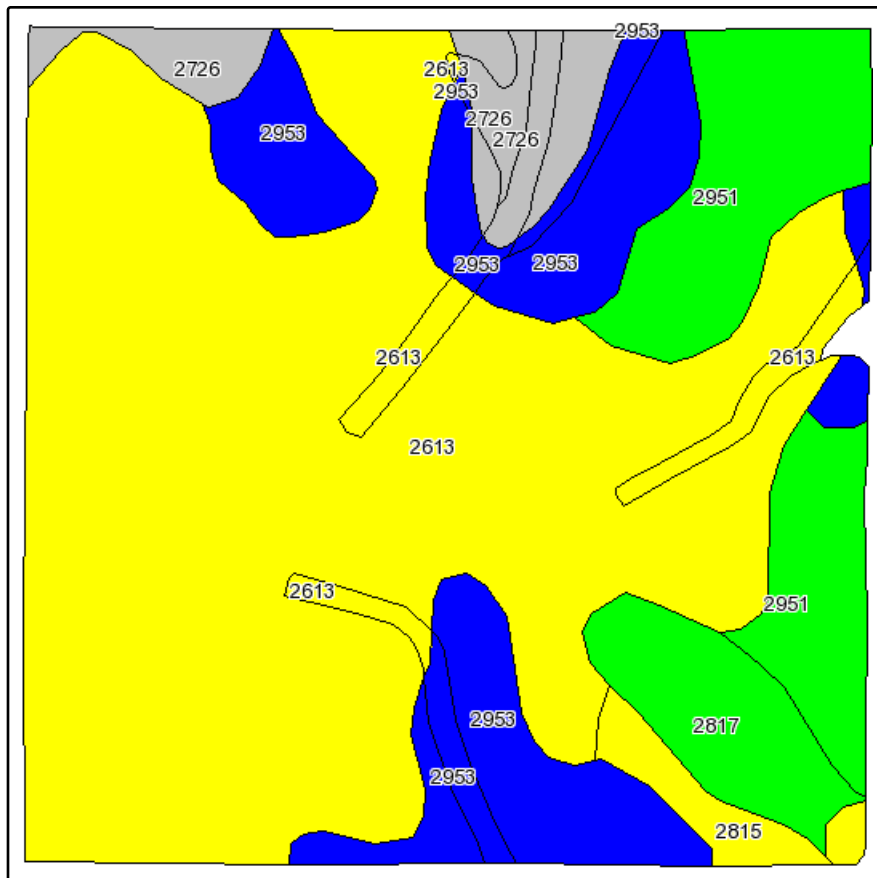
Data use subject to license.

© DeLorme. XMap® 5.2 Professional.

www.delorme.com

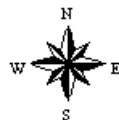


Soils Map



State: **Kansas**
 County: **Rush**
 Location: **028-018S-019W**
 Township: **Union**
 Acres: **155.2**
 Date: **4/29/2011**

Fsa borders provided by the Farm Service Agency as of May 23, 2008.
 Soils data provided by USDA and NRCS.



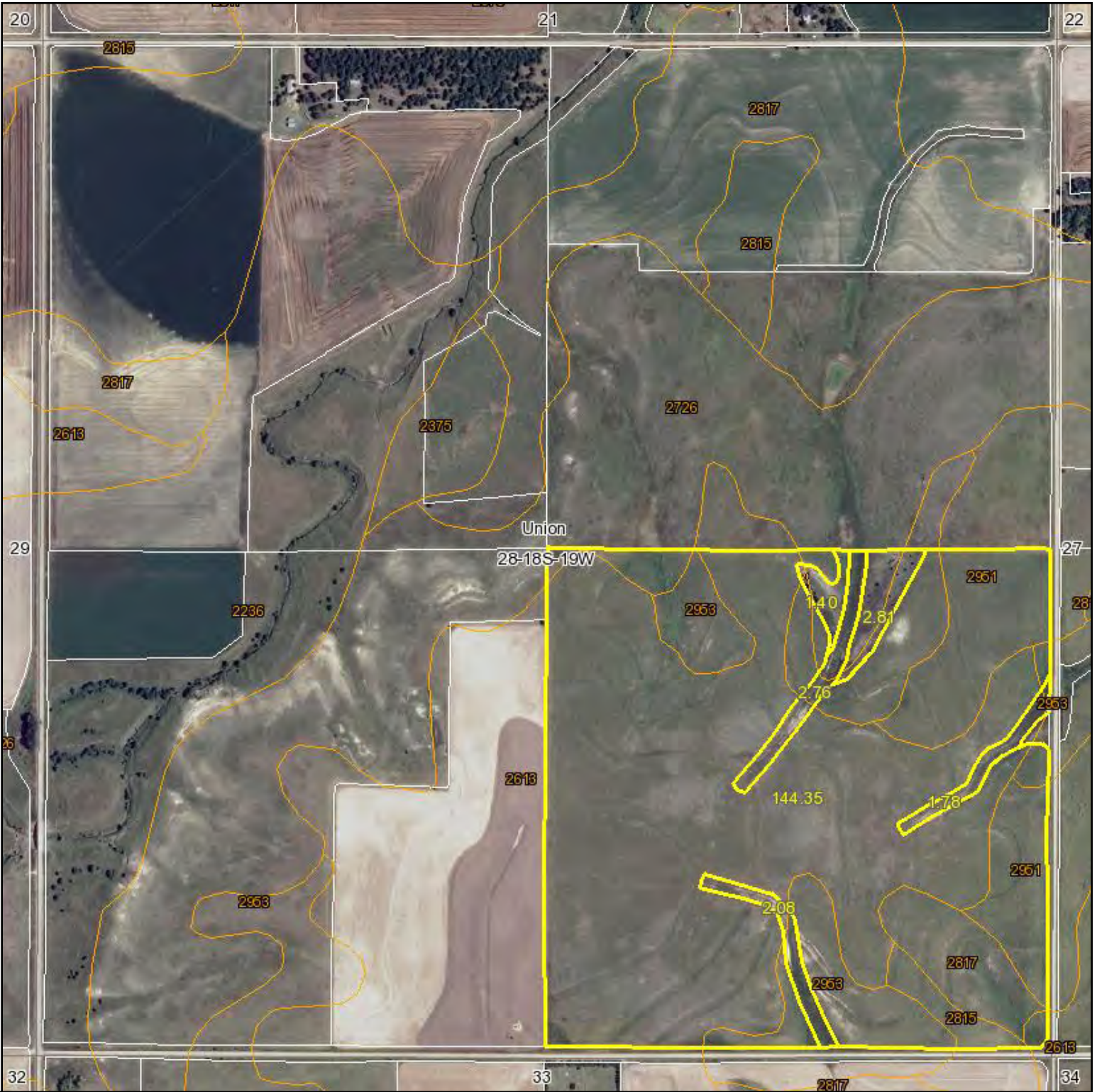
Maps provided by:



©AgriData, Inc 2008
 www.AgriDataInc.com

Code	Soil Description	Acres	Percent of field	Non-Irr Class Legend	Non-Irr Class	Irr Class	Corn
2613	Harney silt loam, 1 to 3 percent slopes	95.2	61.3%		Ile	Ile	
2953	Wakeen silt loam, 3 to 7 percent slopes	24.4	15.7%		IVe		
2951	Wakeen silt loam, 1 to 3 percent slopes	18.3	11.8%		IIIe		
2726	Nibson-Wakeen silt loams, 3 to 20 percent slopes	7.6	4.9%		VIe		
2817	Uly silt loam, 3 to 6 percent slopes	7.1	4.6%		IIIe	IIIe	30
2815	Uly silt loam, 1 to 3 percent slopes	2.6	1.7%		Ile	Ile	35
Weighted Average							2

Aerial Map



map center: 38° 27' 30.75, 99° 25' 43.14

scale: 9865

28-18S-19W
Rush County
Kansas



4/29/2011

Maps provided by:



©AgriData, Inc. 2011

www.AgriDataInc.com

Field borders provided by Farm Service Agency as of 5/21/2008. Aerial photography provided by Aerial Photography Field Office.